



Coyote Lake - Harvey Bear Ranch County Park

Park Hours: 8 am until sunset
Trail Hours: Sunrise to sunset
Ranger Station and Visitor Center: (408) 842-7800

In an emergency, call 911.

Fees are collected for vehicles, boat launching, and mussel inspection of all boats. Entry and launch fees are posted at the entrance station. No fee charged at the Mendoza Ranch or Harvey Bear Entrance

Dogs/Pets: Allowed in all areas of the park on a 6 foot or less leash.

Fires: Permitted in designated barbeque pits only. No fires on open ground or along shoreline. No wood gathering.

Camping: Only in designated areas. Maximum stay 14 days/year (with 14 days maximum between Memorial Day and Labor Day).

Weapons: Firearms, air guns, archery equipment and paintball guns are prohibited

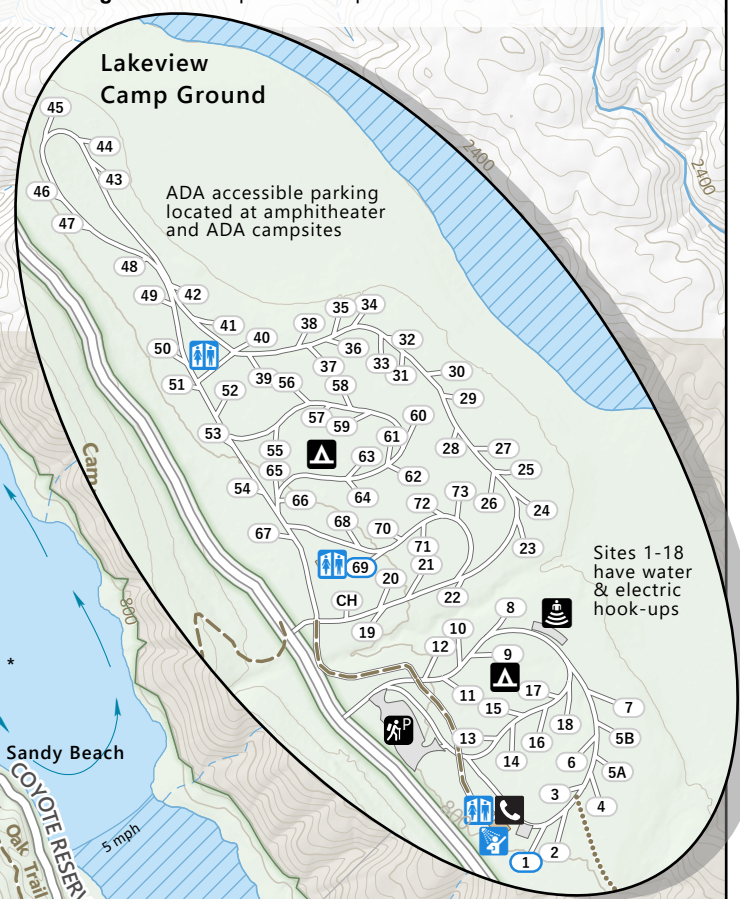
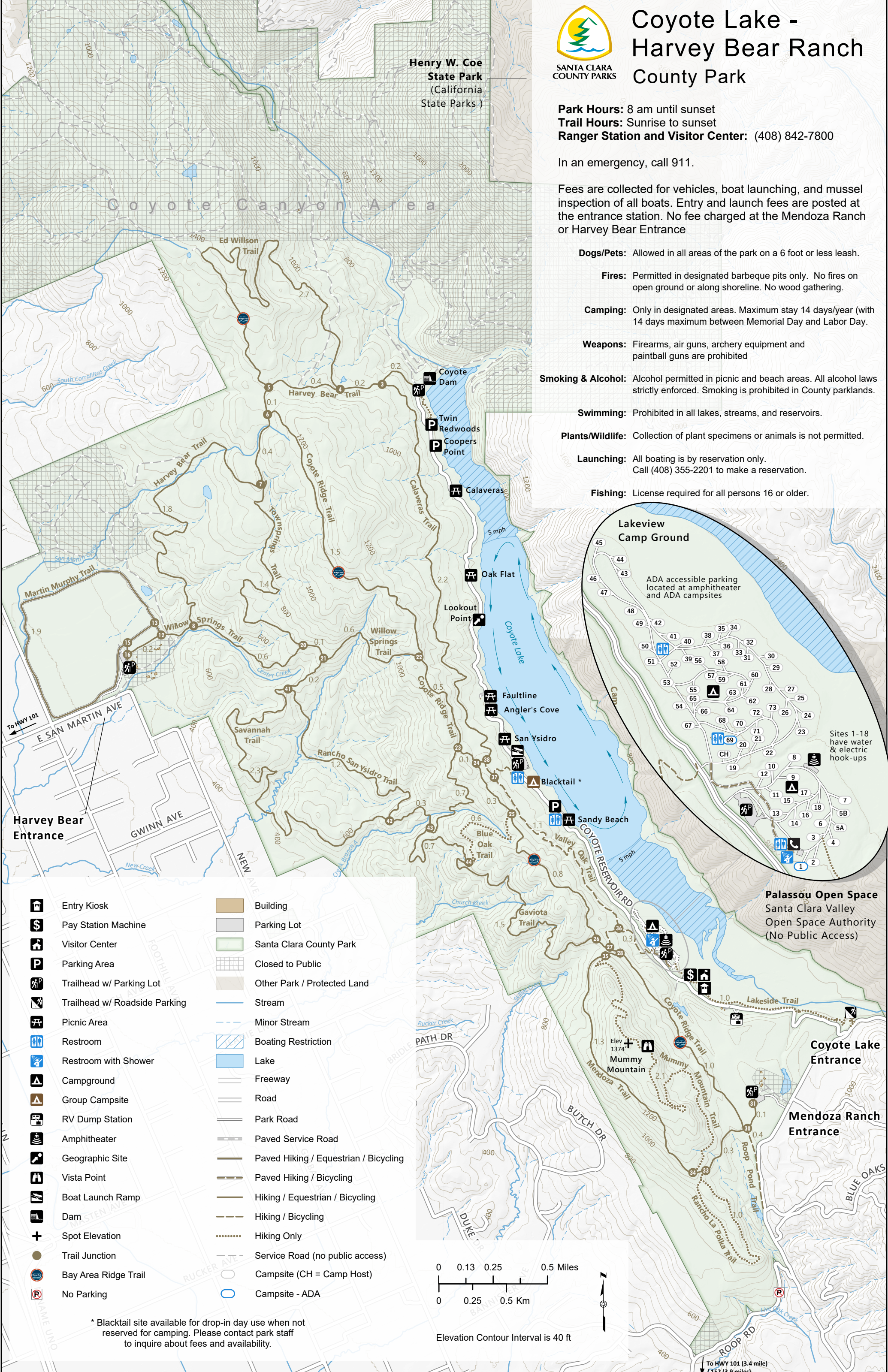
Smoking & Alcohol: Alcohol permitted in picnic and beach areas. All alcohol laws strictly enforced. Smoking is prohibited in County parklands.

Swimming: Prohibited in all lakes, streams, and reservoirs.

Plants/Wildlife: Collection of plant specimens or animals is not permitted.

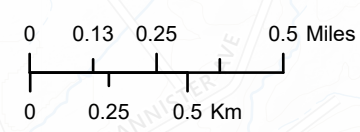
Launching: All boating is by reservation only. Call (408) 355-2201 to make a reservation.

Fishing: License required for all persons 16 or older.



- Entry Kiosk
- Pay Station Machine
- Visitor Center
- Parking Area
- Trailhead w/ Parking Lot
- Trailhead w/ Roadside Parking
- Picnic Area
- Restroom
- Restroom with Shower
- Campground
- Group Campsite
- RV Dump Station
- Amphitheater
- Geographic Site
- Vista Point
- Boat Launch Ramp
- Dam
- Spot Elevation
- Trail Junction
- Bay Area Ridge Trail
- No Parking
- Building
- Parking Lot
- Santa Clara County Park
- Closed to Public
- Other Park / Protected Land
- Stream
- Minor Stream
- Boating Restriction
- Lake
- Freeway
- Road
- Park Road
- Paved Service Road
- Paved Hiking / Equestrian / Bicycling
- Paved Hiking / Bicycling
- Hiking / Equestrian / Bicycling
- Hiking / Bicycling
- Hiking Only
- Service Road (no public access)
- Campsite (CH = Camp Host)
- Campsite - ADA

* Blacktail site available for drop-in day use when not reserved for camping. Please contact park staff to inquire about fees and availability.



Elevation Contour Interval is 40 ft

To HWY 101 (3.4 mile)
To HWY 101 (3.9 miles)