



# Penitencia Creek County Park

**Park Hours:** 8 am until sunset  
**Trail Hours:** Sunrise to sunset  
**Ranger Station:** (408) 262-6980  
*Ranger station located at Ed R. Levin County Park in Milpitas*

In an emergency, call 911.

No entry fees are collected at this time for this park.

**Dogs/Pets:** Allowed in all areas. Must be controlled on a 6-foot (or less) leash at all times.

**Fires:** Permitted in designated barbeque pits only. No fires on open ground. Charcoal fires only.

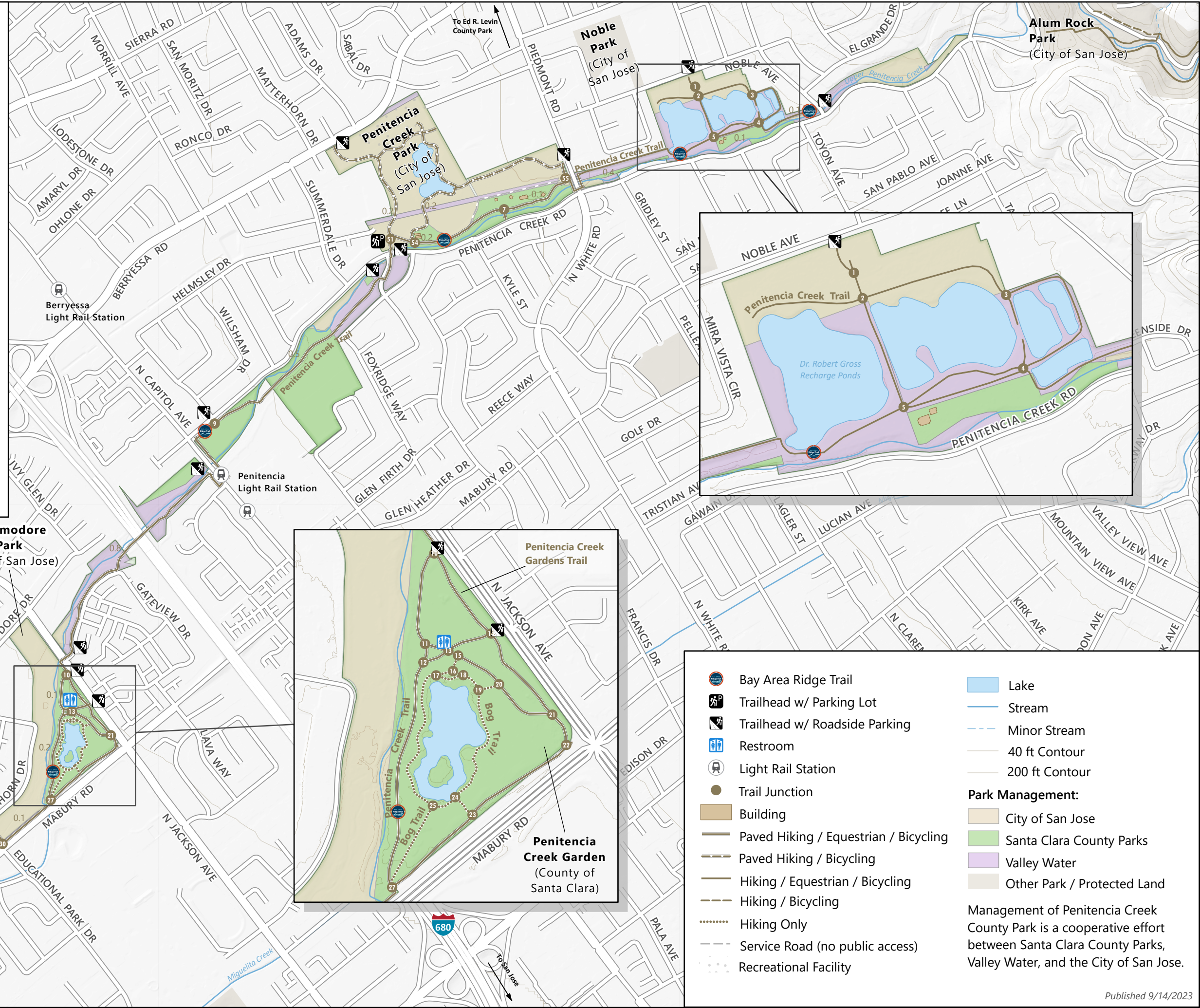
**Weapons:** Firearms, air guns, paintball guns, and archery equipment are prohibited.

**Alcohol:** Permitted in County Park picnic areas only. All alcohol laws strictly enforced.

**Wildlife:** Collection of plant specimens and feeding of birds or animals is not permitted.

**Swimming:** Prohibited in all ponds, streams, and reservoirs.

**Bicycles:** Bicycles allowed only on posted trails. ANSI/Snell approved helmets required for all bicyclists under 18 years old. Bicyclists of all ages must wear helmets on unpaved trails.



- Bay Area Ridge Trail
  - Trailhead w/ Parking Lot
  - Trailhead w/ Roadside Parking
  - Restroom
  - Light Rail Station
  - Trail Junction
  - Building
  - Paved Hiking / Equestrian / Bicycling
  - Paved Hiking / Bicycling
  - Hiking / Equestrian / Bicycling
  - Hiking / Bicycling
  - Hiking Only
  - Service Road (no public access)
  - Recreational Facility
  - Lake
  - Stream
  - Minor Stream
  - 40 ft Contour
  - 200 ft Contour
- Park Management:**
- City of San Jose
  - Santa Clara County Parks
  - Valley Water
  - Other Park / Protected Land
- Management of Penitencia Creek County Park is a cooperative effort between Santa Clara County Parks, Valley Water, and the City of San Jose.

